

UP AND RUNNING WITH PREFLIGHT DESIGNER 1.0

WELCOME TO PREFLIGHT DESIGNER!



WHAT IS EXTENSIS PREFLIGHT DESIGNER EDITION™?

Preflight Designer is the most advanced inspection and collection tool available for graphic designers. It automatically gathers key information from your QuarkXPress® document related to: RGB images and resolution issues, picture and font availability, and color usage. All information gathered about the document, pictures, fonts, and colors can be compactly displayed for your examination.

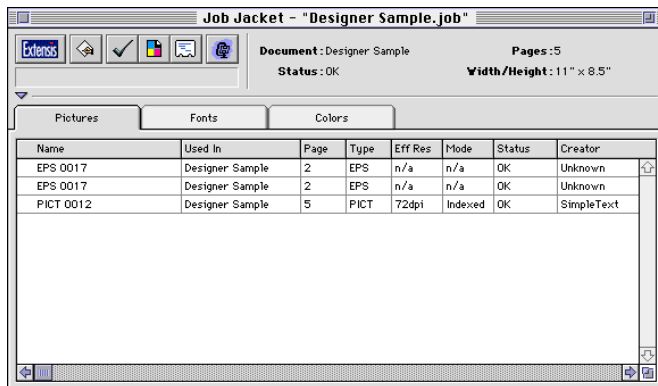
Preflight Designer can also collect all the files associated with the document, including fonts and pictures, for archiving or sending to the output facility—compressed or uncompressed. And Designer allows you to keep track of job details right inside the electronic Job Jacket.

HOW CAN PREFLIGHT DESIGNER HELP ME?

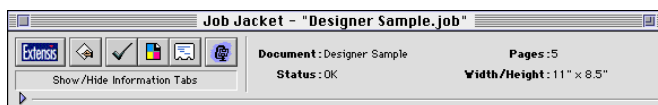
Preflight Designer will help you quickly identify prepress problems, eliminating incomplete files and wasted film. The easy-to-use, intuitive Job Jacket interface makes it easy to check your document so you can take corrective action before output. Using the information gathered you can easily determine, for example, which RGB mode pictures have not been converted to CMYK mode, an important requirement for 4-color printing.

Without Preflight Designer, you would need to open the document and laboriously locate, select, and examine the parameters for each picture. Using Preflight Designer, you can examine the list of pictures and easily scan it for problems. You can bring up more detailed information about the picture simply by double-clicking the item on the list. In the same way, you can access information about font usage and availability, and save wasted film by locating unnecessary colors in the document.

And the job file created by Preflight Designer can be read by Preflight Pro, so you and your service bureau or output facility can team up to create a really seamless transfer from design to final printing!



THE PREFLIGHT DESIGNER JOB JACKET



JOB JACKET WITH INFORMATION TABS HIDDEN

HOW CAN THIS QUICK START GUIDE HELP ME?

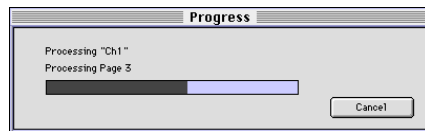
Use this guide as a quick way to get “up and running,” and to become familiar with the basic operations and features of Preflight Designer.

Preflight Designer is simple to use—when you’ve finished with this guide, you’ll know how to inspect the document and examine document information, and how to gather job elements into a collection, including pictures and fonts, and optionally compress them. Learn more about Preflight Designer by referring to your Extensis Preflight Designer Edition User Guide.

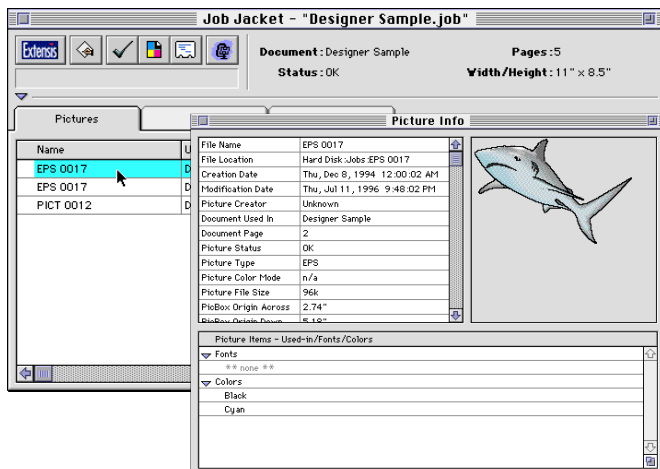
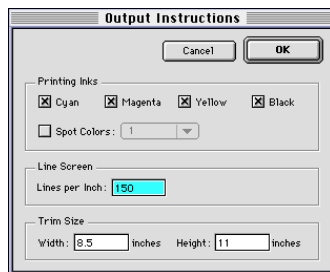
UP AND RUNNING WITH PREFLIGHT DESIGNER 1.0



Preflight Designer™ 1.0



Designer Sample.job



USING PREFLIGHT DESIGNER

CREATE A PREFLIGHT JOB

Create a preflight job using the document you wish to examine. There are several ways to create a new job. You can: drag your QuarkXPress document onto the Preflight Designer icon; or from the Utilities menu in QuarkXPress, select “Preflight Designer: Preflight Document” to preflight the current document, or select “Preflight Designer: Preflight Designer” from the QuarkXPress Utilities menu to launch Preflight Designer and select a different document for preflighting; or just launch Preflight Designer and select “New” from the File menu (or use ⌘N).

What happens next depends on which of the above methods you chose to start the preflight process. Preflight Designer will launch QuarkXPress (if it is not already open), open the document (if it is not already open) and inspect it. During the inspection process, all the information about the document, pictures, fonts, and colors used in the document will be gathered. Pictures, fonts, and colors on unused Master Pages and unused Style Sheets will be ignored.

You don't need to worry about saving your job—Preflight Designer does it for you. New jobs are automatically saved into the same folder as the document, using the document name with “.job” appended to it. And your job is saved periodically as you work. Of course, you can always use the “Save As...” command to save and/or rename your job at any time.

VERIFY OR CHANGE OUTPUT INSTRUCTIONS



(For use with Preflight Pro) While Preflight Designer gathers nearly all document information critical to the successful output of the job automatically during the inspection process, the Output Instructions, which include such critical information as printing inks, line screen, and trim size, must be hand-entered so they may be checked against the document settings when a problem report is generated in Preflight Pro. This dialog is presented automatically when you select a document for inspection. To edit the Output Instructions at other times, click the “Output Instructions” button or select “Output Instructions” from the Job menu.

EXAMINE INFORMATION ABOUT ELEMENTS IN THE JOB

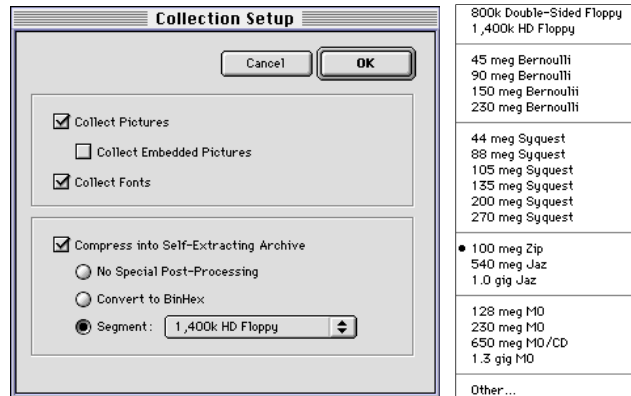
You can quickly examine detailed information about pictures, fonts, and colors.

After Preflight Designer has inspected the document, all the information about the document will be displayed in the “Job Jacket.” Select the tab for the element you wish to view. To open a detailed information window about the element, simply double-click its entry on the list.

You can “hide” the information portion of the Job Jacket window by clicking the “Show/Hide” arrow located beneath the button bar.

UP AND RUNNING WITH PREFLIGHT DESIGNER 1.0

USING PREFLIGHT DESIGNER

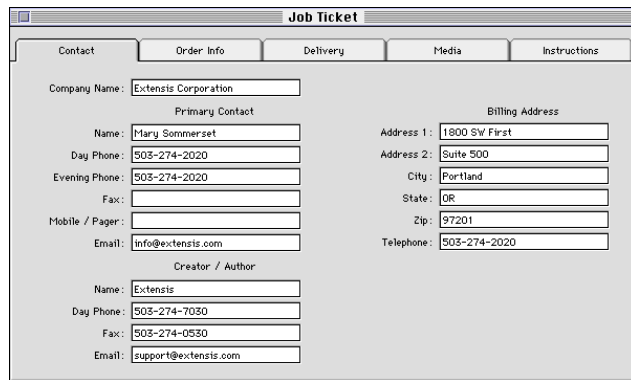


COLLECT JOB ELEMENTS

You can gather together the document and all the pictures and fonts that make up the job by clicking the “Collect Job Elements” button, or selecting “Collect Job Elements” from the Job menu. You will see a list of the items to be collected, and you will have an opportunity to add additional items, or delete items from the list before the collection is gathered.

You will also have the option of having the collection compressed or not compressed. And you can specify the archive media so that Preflight Designer can segment your compressed archive into predefined sizes, so you can put it on several disks if necessary.

To gather a collection you must first create a job. This allows Preflight Designer to determine what items to collect. Once the job has been inspected you can reopen the job at any time to collect or reinspect it.

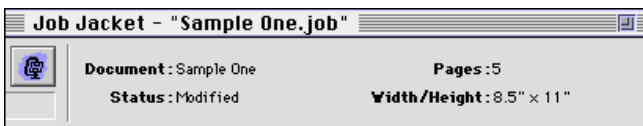


ENTER JOB TICKET INFORMATION



The Job Ticket includes important information such as: who is responsible for the project; project due dates; job pick up and delivery instructions; what media the document will be output on, etc.

The Job Ticket can be helpful for anyone wanting to keep job information with their electronic job files, but it is particularly helpful when the job will be sent to a service provider who uses Extensis Preflight Pro. In this case, important job information entered on the Job Ticket will be automatically available to the service provider when they open it in Preflight Pro.



REINSPECTING THE DOCUMENT



Preflight Designer gathers all the information about the document and job elements during the initial “inspection.” The inspection is performed automatically when the job is created. Once the information has been gathered it is available for examination in the Pictures, Fonts, and Colors tabs in the Job Jacket.

If the document has been modified since it was last inspected, it will be listed as “Modified” by Preflight Designer until it has been reinspected. Reinspect the document by clicking the “Reinspect Document” button, or by selecting “Reinspect Document” from the Job menu.

UP AND RUNNING WITH PREFLIGHT DESIGNER 1.0

MORE INFORMATION

EXTENSIS CORPORATION

1800 S.W. First, Suite 500
Portland, OR 97201
Phone: 503-274-2020
Fax: 503-274-0530
E-mail: info@extensis.com
Internet: <http://www.extensis.com>

CUSTOMER SERVICE

Phone: 800-796-9798
E-mail: sales@extensis.com

TECHNICAL SUPPORT

Phone: 503-274-7030
Monday–Friday, 8am–5pm Pacific
E-mail: support@extensis.com
AOL: Extensis

EXTENSIS EUROPE

Zonnebaan 34 • 3603 CB Maarsse
The Netherlands
Telephone #31 (0)30 247 50 50
Fax: #31 (0)30 241 20 39
E-mail: extensis@euronet.nl

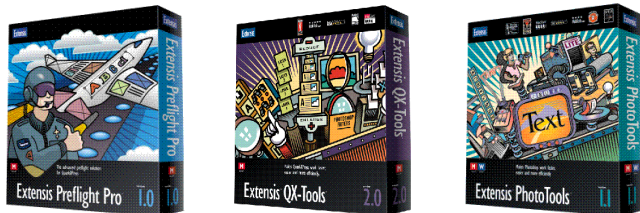
LEARN MORE ABOUT PREFLIGHT DESIGNER EDITION

We've given you an overview of the process of preflighting with Preflight Designer. For additional information about the many features and options available, as well as information on getting the most from your software, refer to your Extensis Preflight Designer Edition 1.0 User Guide.

VISIT OUR WEB SITE!

For Frequently Asked Questions (FAQs), troubleshooting information, and other up-to-date information about Extensis Preflight Designer Edition, Extensis Preflight Pro, and other Extensis products, visit our web site at: <http://www.extensis.com>

OTHER TIME-SAVING PRODUCTS FROM EXTENSIS



In addition to Extensis Preflight Designer and Extensis Preflight Pro, Extensis offers an array of products that extend the capabilities of popular graphics and layout applications such as QuarkXPress, Adobe Photoshop®, Adobe Illustrator®, Adobe PageMaker®, and Macromedia FreeHand™. Information about other Extensis products is available on the Extensis CD in Adobe Acrobat™ PDF format. Working demo versions of these products are also available on the CD. These demo versions work for a limited amount of time, but can be easily converted to standard product by entering a product serial number. Contact Extensis Customer Service at 800-796-9798 for more information.